

History and Projections of Tombs Research in the Taiwan Area

Oliver Streiter

National University of Kaohsiung

ostreiter@nuk.edu.tw

The ThakBong Project: Fieldwork

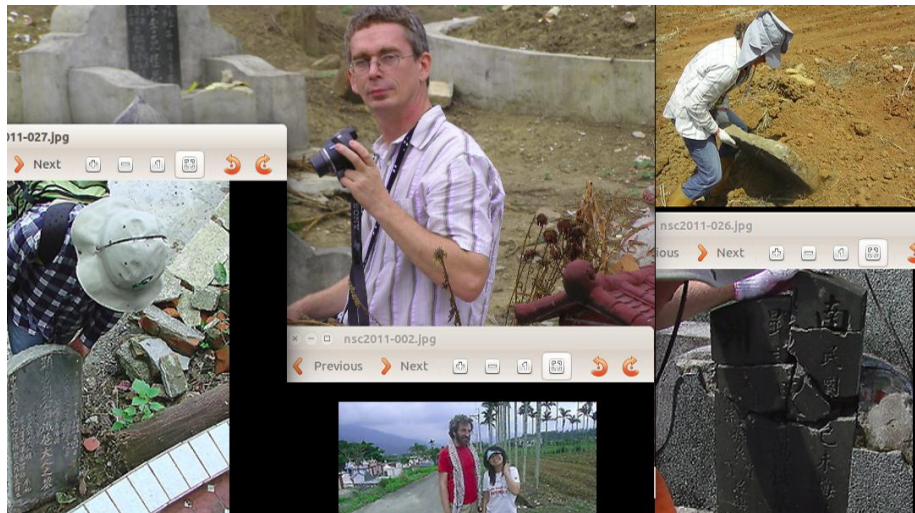


Figure 1

The ThakBong Project: Fieldwork



Figure 2

The ThakBong Project: GPS-Photos

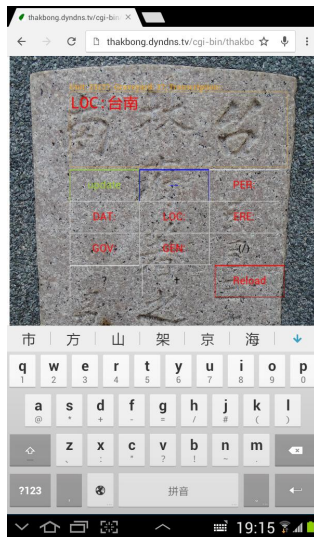


Figure 3

The ThakBong Project: Annotation and Transcription



(a) The annotation of features through



(b) The transcription of a tombstone, overlaying the transcription interface

The ThakBong Project

Large-Scale Survey

- since 2007
- 312.000 photos (with GPS, compass)
- 5000 audio files
- 77.000 tombs (38.000 transcribed)
- 1046 days of Fieldwork
- <http://thakbong.dyndns.tv>

The ThakBong Project

Data Integration

- Researchers
- Students, friends, collaborators
- Community records
- Previous research data

The ThakBong Project: Archiving

Data Archiving and Networked Services

Nederlands | Contact | Search this website

DANS

HOME | DEPOSIT | SEARCH | TRAINING AND CONSULTANCY | PROJECTS | ABOUT DANS | NEWS AND EVENTS

DANS promotes **sustained access** to digital research data files and encourages researchers to **archive** and **reuse** data.

ARCHIVING
Deposit your datasets in EASY or send research data and publications to NARCIS.
DEPOSIT

REUSE
Find datasets, publications, researchers, projects and institutions via NARCIS and EASY.
SEARCH

TRAINING & CONSULTANCY
Let DANS advise you on data management and certification of digital archives.
ADVICE FROM DANS

SPOTLIGHT
DANS and Inria sign the MoU for Software Heritage

Software Heritage

DANS will collaborate with Inria (France) on the development of the Software Heritage Initiative. On June 30 Inria officially announced the collaboration with DANS with the launch of the Software Heritage website.

NEWS
Your data paper in Research Data Journal for the Humanities and Social Sciences

RDJ, published by Brill publishers and DANS, is a peer reviewed e-only open access journal. Authors can submit their data papers online.

DANS Retweeted
NCDD
@info_NCDD
Nieuwsbrief Digitale Duurzaamheid is uit: eepurl.com/cbVFRP o.a.
@BeeldenGeluid @DANSKNAW @NA_Archief @KB_Nederland @NieuweInstituut
19 Sep

Figure 5

Fieldwork History

Sampled per Year, Cumulative

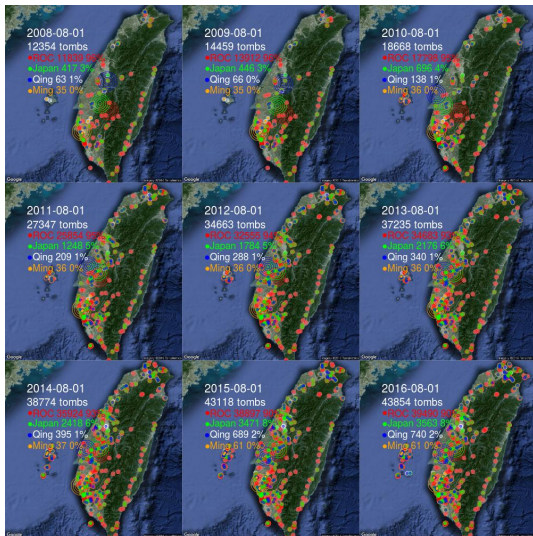


Figure 6 Documentation fieldwork between 2007 and 2016, cumulative representation

Data Collection

Survey

- Sampling
- Census
- Documentation
- Convenience sampling ## What is this?

Data Collection

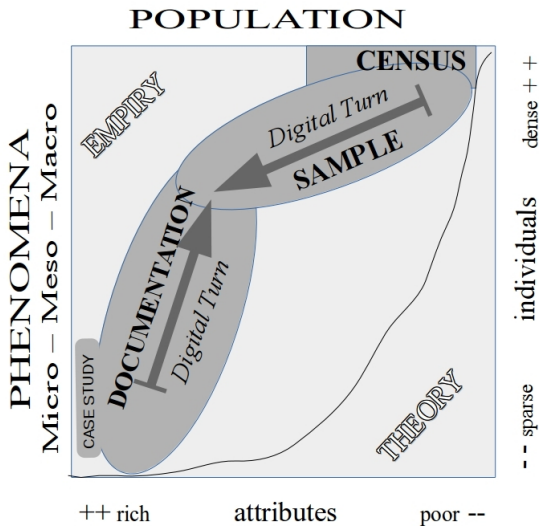


Figure 7

Factors: Removal



Figure 8

Factor: Third party images

Researchers

Local administration

- different themes, quantity and quality ## Older archives and research data

administration

Xindian 6.000 photos

Yanshui 400 photos (paper)

Gaoxiong 110.000 (GPS)

Penghu 12.000 (photos, Word, PDF)

Previous Research, e.g. Wolfgang Franke

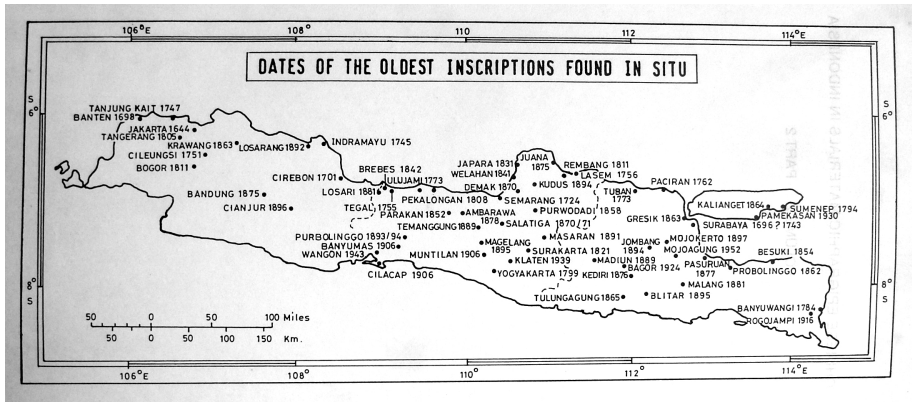


Figure 9

Factor: Hot Spots (thematic): GU

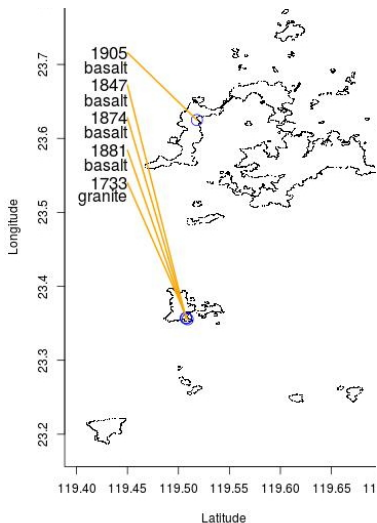
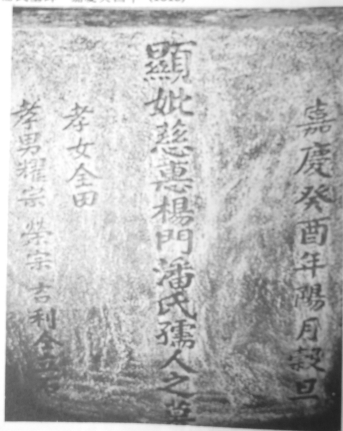


Figure 10

Wolfgang Franke: GU

outside the town, since there was no common Chinese cemetery per
century.

楊潘氏墓碑 嘉慶癸酉年 (1813)



嘉慶癸酉年陽月穀旦

Figure 11

Factor: Hot Spots ... Muslim graveyards

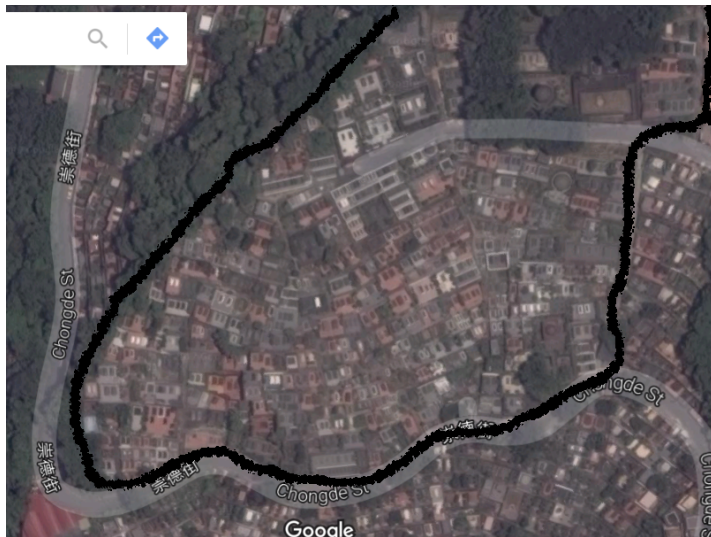


Figure 12

Factor: Hot Spots ... Muslim graveyards



Figure 13

Factor: Hot Spots ... Muslim graveyards

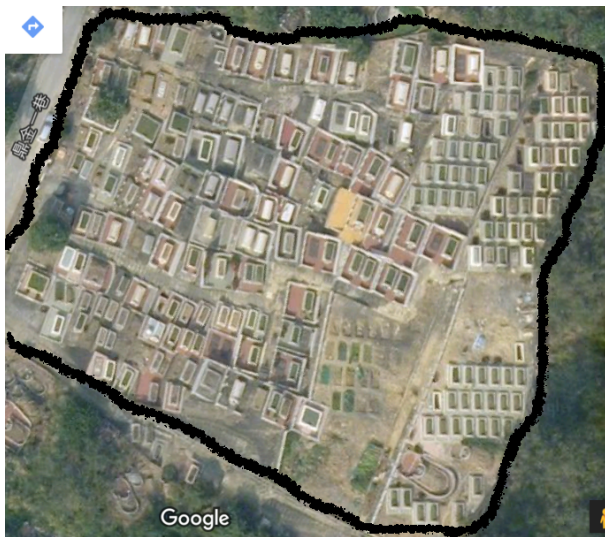


Figure 14

Fieldwork History

Sampled per Year

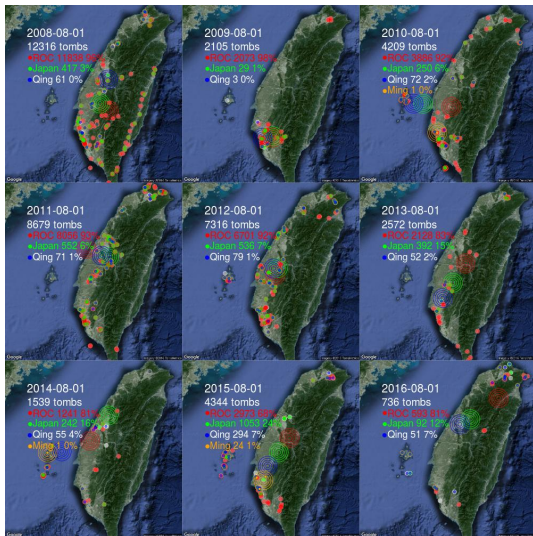


Figure 15

Fieldwork, also Okinawa

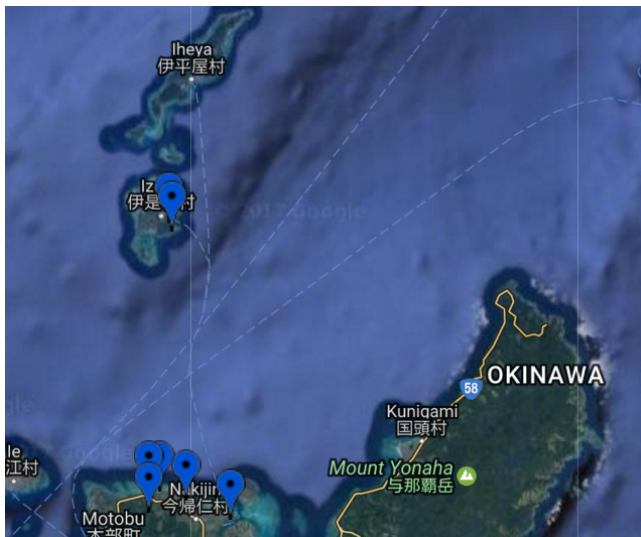


Figure 16

Fieldwork, also Japan

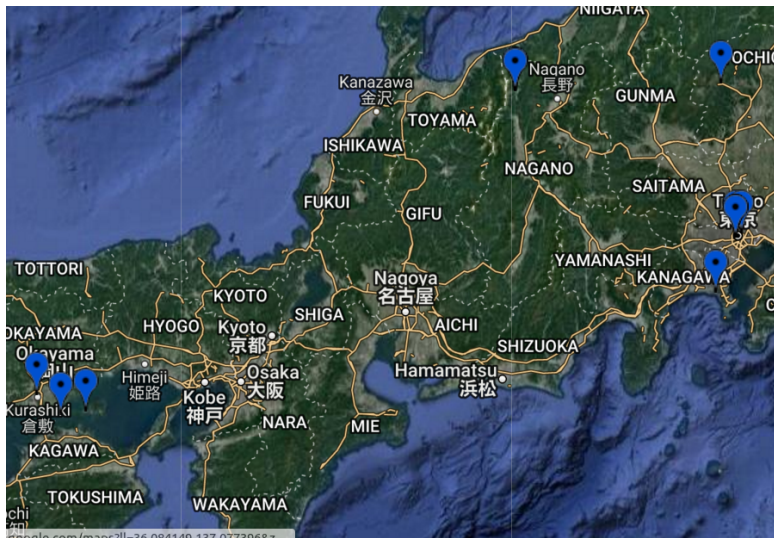


Figure 17

Micro - Meso - Macro: Different Agents

Macro : Top-down forces (religion, state, language)

Micro : Individuals, errors, rebels, opponents,

Meso : Professional, artists, multipliers

??? : Migration, Propagation

??? : Material

Macro Phenomena (Carvers) → Sampling

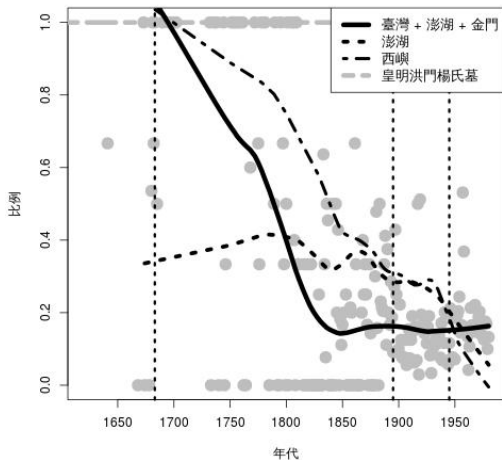


Figure 18

Macro Phenomena (state) → Sampling

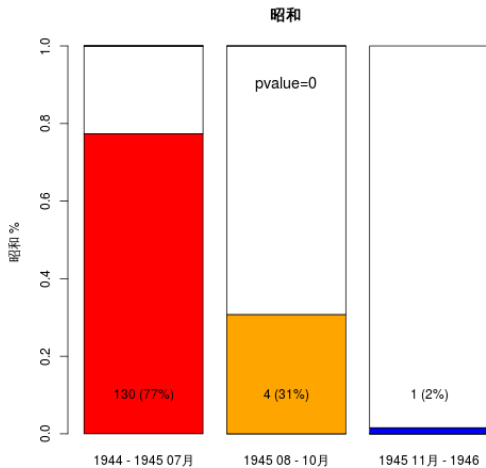


Figure 19

Exceptions to Macro Phenomena → ?

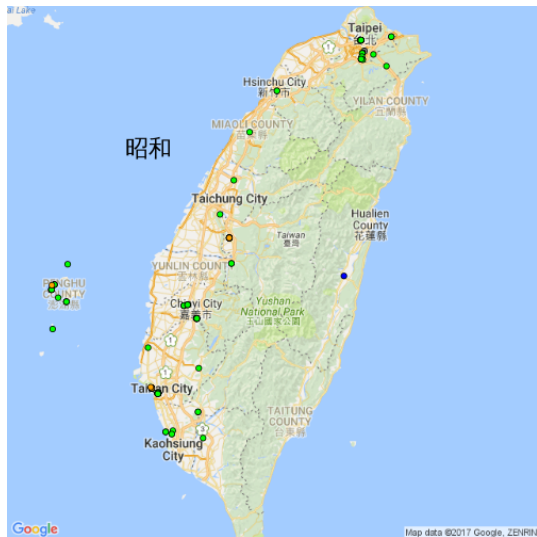


Figure 20

Meso Phenomena (Space) → Local documentation/sampling

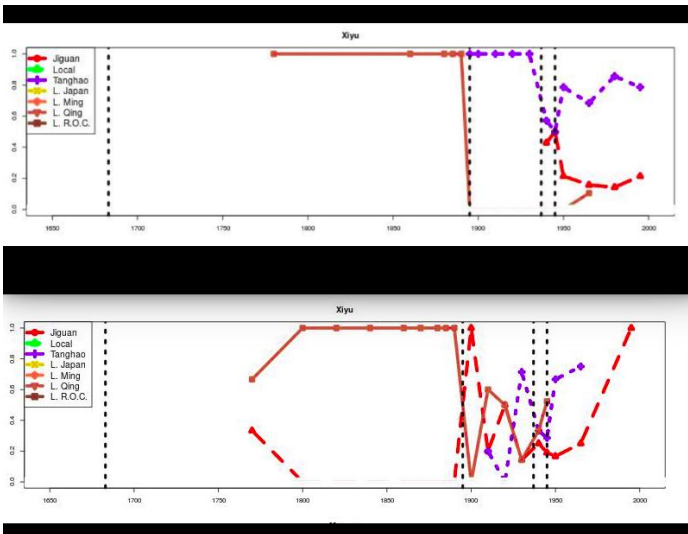


Figure 21

Propagation → Census



Figure 22

Propagation → Census ???

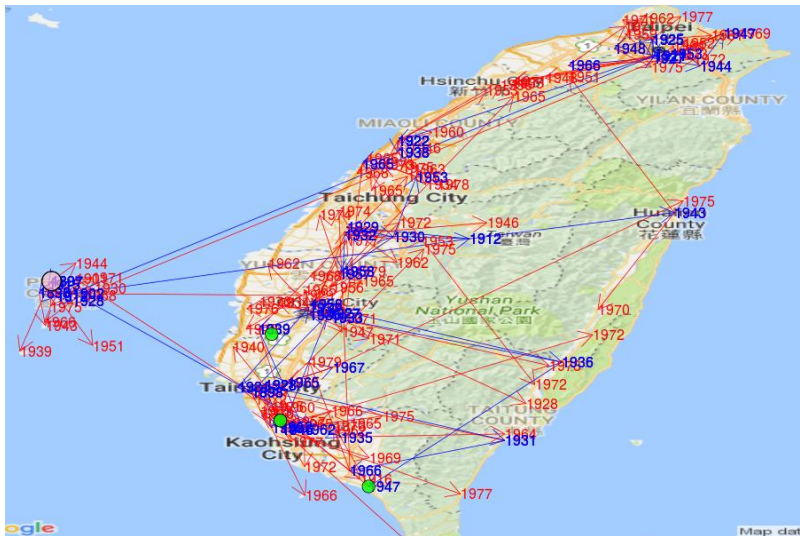


Figure 23

Material (Natural Stone) → Temporal Census

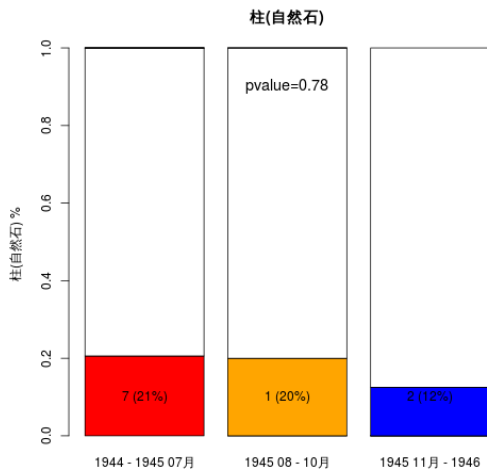


Figure 24

Material (Artificial Stone) → Temporal Census

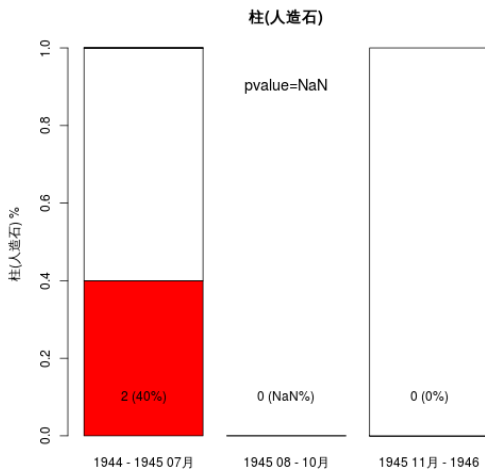


Figure 25

Micro + Meso + Macro == Sample ??

yes, almost

small statistical distortion, anyway

meaningful approaches require space and time

meaningful approaches require contrast

Upcomming ...



Oliver Streiter

January 15 at 4:33pm

That was DRGT 2015, an incredibly intense workshop. Now we are planning for DRGT 2017.



Figure 26